



16 TALES OF *Smiles!*



STOCK IMAGE

LIVE...

16 TALES OF

Queens!

Exclusive homes, each designed as a unique story of joyful living. Set amidst the serene hills of Pune, the project blends nature, peace, and everyday comfort into a harmonious lifestyle.





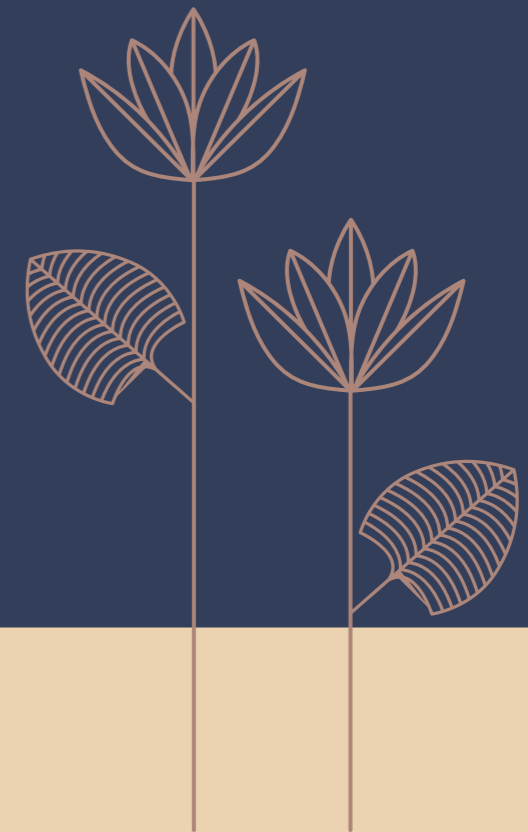
STOCK IMAGE

LIVE...

16 TALES OF

Calm!

Surrounded by rolling greenery and fresh air, residents wake up to nature, experience calm in their daily rhythm, and enjoy a rare sense of balance away from the city's chaos.





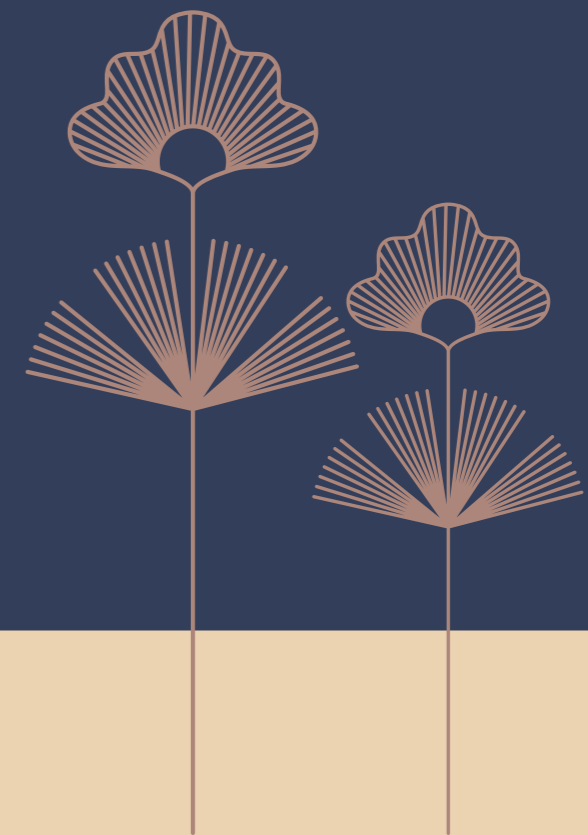
STOCK IMAGE

LIVE...

16 TALES OF

Connection!

At the same time, it offers seamless connectivity to key city hubs, workplaces, and conveniences, combining tranquility with accessibility. Creating a living experience where serenity and modern life coexist effortlessly.



A SPHERE THAT...

CONNECTS WITH
NATURE!

CONNECTS WITH
PEOPLE!

CONNECTS WITH
LIFE!



LIVE...

A LIFE IN PERFECT

Balance

The name Trimurti Sphere reflects a thoughtful blend of tradition and modern living. Trimurti, symbolising the powerful trinity of creation, balance, and progress, represents the timeless values that shape meaningful spaces. Sphere brings in a modern perspective, a connected world where life, comfort, and convenience come together seamlessly. Together, the name reflects a harmonious living environment that balances heritage with contemporary design. It also aligns with the Group's vision of creating homes that combine strong foundations, thoughtful planning, and a complete lifestyle experience.





Rare. Royal. Refined.

THE SPHERE
CONNECTS TO

Life!

Located at Ashok Path, where Vetal Hill breathes calm into everyday life, **Trimurti** Sphere feels less like a residence and more like a quiet privilege. With just 16 thoughtfully crafted **3 & 3.5 luxury apartments**, it offers space, light, and privacy in a neighbourhood where greenery frames every moment.

Here... mornings are softer, evenings slower, and life finds its natural rhythm, effortless, elevated, and deeply calm.

P R E S E N T I N G



TRIMURTI
SPHERE



ARTISTIC IMPRESSION

BINAWAT
TRIMURTI

The total land parcel of the project is **10.5 R**

The configuration consists of
3 & 3.5 luxury apartments

There are a total of **16 flats** in the project

The building structure is **P2 + 4 floors**





STOCK IMAGE

When Calm Speaks...

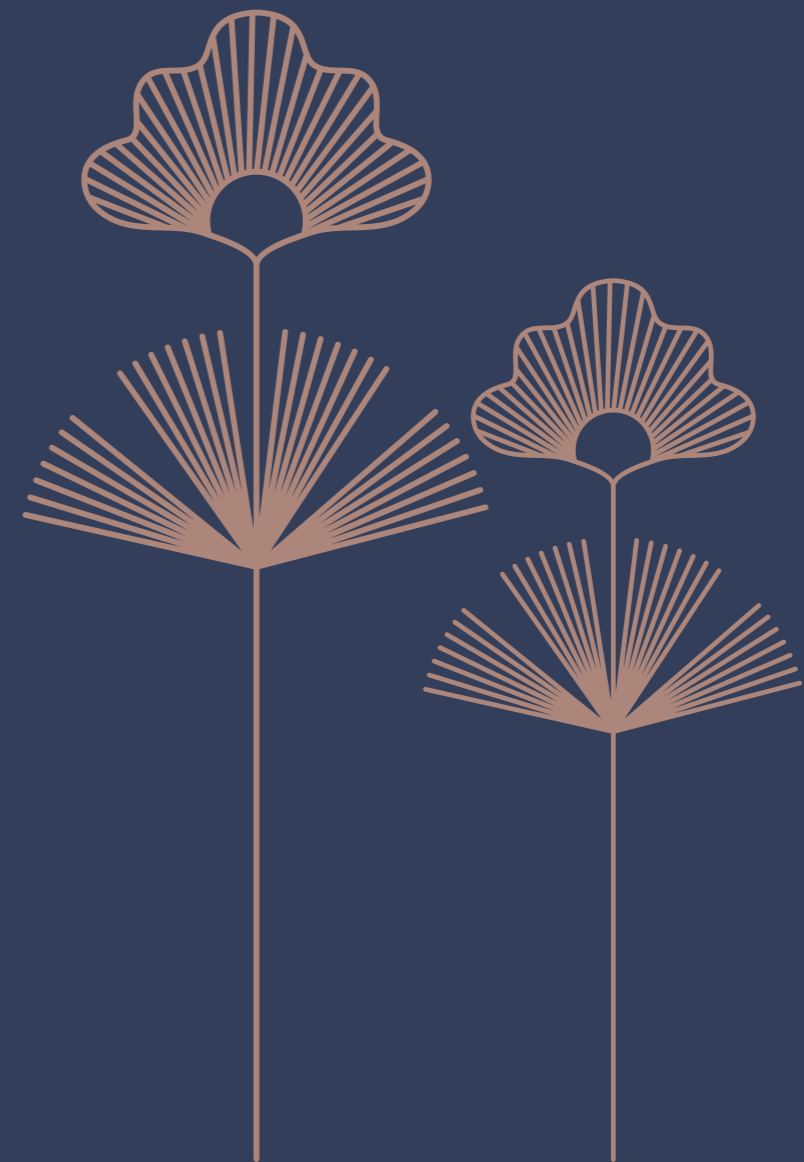
QUIET FEELS

Powerful

Here, every morning whispers with the rustle of leaves, and every evening sighs in the gentle embrace of greens. Life unfolds amidst lush surroundings, where Vetal Hill and ARAI Hills stand as guardians of peace, and the world slows down to the rhythm of nature.

To live here is to step into a dream once imagined, where serenity is just next door, and the air carries life.

Being Closer To Nature Feels Like Being Closer To Yourself!





CHILDREN'S PLAY AREA

STOCK IMAGE



MEDITATION AREA

STOCK IMAGE



A LIFE.. AT ITS *Best!*

Moments slow down here,
where open spaces invite conversations and quiet pauses.
A place where everyday living feels lighter, calmer, and beautifully complete.



SEATING AREA



PARTY LAWN



GAZEBO

SPECIFICATIONS



STRUCTURE & MASONRY

- Earthquake-resistant RCC framed structure
- 6" red clay brick external walls and 4" internal brick walls
- Anti-termite treatment during construction by a reputed agency
- Sand-faced double-coat external plaster
- Cement plaster with gypsum finish for interiors
- IPS terrace waterproofing with 10-year guarantee
- Rainwater harvesting as per PMC norms
- Underground & overhead water tanks with borewell water softener



KITCHEN

- 12' x 2'3" granite/marble kitchen platform
- Stainless steel sink with drain board
- Ceramic tile dado 2-3 ft above the platform
- Dry balcony with washing machine provision and utility sink



GRILLS & RAILINGS

- Invisible grills for all windows
- Balcony railing with toughened glass
- Internal walls with Lustre/Royal paint finish
- Exterior elevation with texture paint
- Saint-Gobain glass windows



BATHROOM / TOILET

- Ceramic tiles up to ceiling with PVC false ceiling
- Hot & cold mixer with countertop wash basin
- Wall-hung commode with concealed flush tank & health faucet
- Premium sanitaryware (CERA / Johnson or equivalent)
- Jaquar or equivalent plumbing fixtures
- CPVC internal plumbing & uPVC drainage (Finolex or equivalent)
- Individual stop cock for toilet & kitchen lines
- Water inlet & outlet in attached terraces



ELECTRICAL FITTINGS

- Concealed copper wiring (Polycab / RR / KEI)
- Modular switches (Schneider / Legrand or equivalent)
- AC points in living room & bedrooms
- Boiler point in all toilets
- EV charging provision in each parking with a separate meter
- DG backup for lifts, pumps & common lighting
- CCTV at entrance, lobbies, terrace & perimeter
- Video door phone for each flat



DOORS & WINDOWS

- Laminated main door with marine plywood frame & night latch
- Internal laminated flush doors with hardwood frame
- Waterproof toilet doors with granite frame
- uPVC sliding terrace doors with mosquito mesh
- uPVC windows with mosquito screen
- Louvered uPVC toilet windows with exhaust provision
- Granite window sills
- Stainless steel fittings & hardware



FLOORING

- 1200 x 600 mm vitrified tiles in all rooms with skirting
- Wooden finish tiles in the master bedroom
- Anti-skid tiles in balconies & terraces
- Rubber-moulded paving blocks
- Chequered tiles in stilt parking



FLAT FEATURES

- Inverter provision for each unit
- Modular kitchen with chimney & hob
- MNGL gas pipeline provision
- Exhaust fans in kitchen & bathrooms
- Water purifier provision
- Geyser provision in bathrooms





ARTISTIC IMPRESSION

BINAWAT
TRIMURTI

BINAWAT
TRIMURTI

BECAUSE...
SMILES LIVE *Here!*

Living here means being surrounded by learning at every step. From reputed law, management, engineering, arts, and research institutions to some of Pune's most reputed colleges, education is part of the everyday environment. It's a neighbourhood where young minds grow with access, inspiration, and opportunity, making it ideal for families that value knowledge, culture, and progress. Here, education shapes the neighbourhood as much as it shapes the future!



LIVE WHERE PUNE

Breathes

Living here means waking up to serenity, yet staying seamlessly connected to the city's finest. Surrounded by Pune's most respected educational institutions and cultured neighbourhoods, life flows between learning, leisure, and quiet reflection. With **FC Road, Deccan, Kothrud,** and **Shivajinagar** just minutes away, you enjoy access without intrusion, where calm living and an elevated lifestyle meet in perfect balance.



LOCATION MAP



MISCELLANEOUS / CONNECTIVITY

Deccan Gymkhana	1 Km
Vanaz Metro Station	4 Km
Kothrud Bus Depot	4.5 Km
Pune Railway Station	5.5 Km



HOSPITALS

Sahyadri Hospital, Karve Road	1.2 Km
Deenanath Mangeshkar Hospital	1.5 Km
Krishna Hospital	2.7 Km
Oyster & Pearl Hospital	3.5 Km



SCHOOLS & COLLEGES

MIT School & College	2.1 Km
Bharati Vidyapeeth	2.4 Km
City Pride School	3.1 Km
Millenium National School	4.4 Km



SHOPPING & ENTERTAINMENT

City Pride Multiplex, Kothrud	3.1 Km
DMart, Kothrud	4.4 Km
More Supermarket	3.3 Km



SCAN FOR LOCATION



TRIMURTI SPHERE



MAP NOT TO SCALE



UNIT PLAN 3 BHK



- 1 Entrance
- 2 Living Room
- 3 Balcony
- 4 Dining Area
- 5 Kitchen
- 6 Dry Balcony
- 7 Common Washroom
- 8 Bedroom
- 9 Master Bedroom 01
- 10 Attached Washroom 01
- 11 Master Bedroom 02
- 12 Attached Washroom 02
- 13 Attached Balcony



UNIT PLAN 3.5 BHK



- | | | | |
|---------------|-------------------|------------------------|------------------------|
| ① Entrance | ⑤ Kitchen | ⑨ Master Bedroom 01 | ⑫ Attached Washroom 02 |
| ② Living Room | ⑥ Dry Balcony | ⑩ Attached Washroom 01 | ⑬ Attached Balcony 01 |
| ③ Balcony | ⑦ Common Washroom | ⑪ Master Bedroom 02 | ⑭ Attached Balcony 02 |
| ④ Dining Area | ⑧ Bedroom | | |



FIRST FLOOR PLAN

FLAT NO.	FLAT TYPE	FLAT CARPET	BALCONY AREA	FORMED TERRACE 50%	TOTAL CARPET AREA	
		SQ.M.	SQ.M.	SQ.M.	SQ.M.	SQ.FT.
101	3 BHK	94.96	11.97	10.13	117.06	1260
102	3 BHK	94.96	11.97	10.13	117.06	1260
103	3.5 BHK	105.38	11.97	6.73	124.08	1336
104	3 BHK	95.21	11.97	7.55	114.73	1235





**TYPICAL
2ND, 3RD & 4TH
FLOOR PLAN**

FLAT NO.	FLAT TYPE	FLAT CARPET	BALCONY AREA	TOTAL CARPET AREA	
		SQ.M.	SQ.M.	SQ.M.	SQ.FT.
201, 301, 401	3 BHK	94.96	11.97	106.93	1151
202, 302, 402	3 BHK	94.96	11.97	106.93	1151
203, 303, 403	3.5 BHK	105.38	11.97	117.35	1263
204, 304, 404	3 BHK	95.21	11.97	107.18	1154





A TALE OF
Excellence!

27+

YEARS EXPERIENCE

Founded in 1999 as Nilesh Constructions by Mr Shekhar P. Binawat, Binawat Realty LLP has grown into a trusted name in residential and commercial development across South Pune and beyond. With a strong foundation in affordable yet quality-driven construction, the Group has consistently delivered spaces that balance functionality, innovation, and long-term value. In 2016, the firm evolved into Binawat Realty LLP, reinforcing its vision through a partnership-led structure rooted in excellence, inclusion, and sustainable growth. Today, the Group's expertise spans Real Estate, Infrastructure Development, and Hospitality, guided by a commitment to innovation, timely delivery, and enduring relationships.

17+ PROJECTS
COMPLETED

7+ LAKH SQ. FT.
AREA DEVELOPED

2000+ HAPPY
FAMILIES

ONGOING PROJECTS

ANANT HOMES
(Hadapsar)

ELINA PREMIUM
(Hadapsar)

UPCOMING PROJECTS

**HANDEWADI CHOWK,
HADAPSAR**

SHIVAJINAGAR

PARVATI

COMPLETED PROJECTS

BINAWAT PARK
(Kalepadal, Hadapsar)

NILESH HEIGHTS
(Ramtekdi, Hadapsar)

NILESH RESIDENCY
(Sasane Nagar, Hadapsar)

NILESH COMPLEX
(Sasane Nagar, Hadapsar)

NILESH ANGAN
(Wadgaon Sheri, Pune)

NILESH CLASSIC
(Satav Nagar, Handewadi)

NILESH PARK
(Malwadi, Hadapsar)

SHIVANAND COMPLEX
(Satavwadi, Hadapsar)

NILESH PLAZA
(Kalepadal, Hadapsar)

KANDHARE ASSOCIATES
(Kothrud, Pune)

NILESH PRESTIGE
(Kalepadal, Hadapsar)

SHIVANAND APARTMENT
(Hadapsar Gaon)

NILESH KUNJ
(Loni Kalbhor, Pune)

NILESH SAMRUDDHI
(Handewadi, Pune)

SB PARADISE
(Sangli - Miraj, Maharashtra)

CREDITS

Legal Advisor:
Adv. Yuvraj Satpute

RCC Consultant :
Structure Vizion

Land scape Arch :
Cubix Architects



BINAWAT
REALTY LLP —————
SHEKHAR BINAWAT GROUP

A VENTURE WITH:

DESHPANDE & JOSHI FAMILY

M. +91 96992 63842 / 90220 57806 | **E.** binawatrealty@gmail.com | **W.** binawatrealty.in

ADD. Plot No 82/13, Law College Road, Behind Maruti Suzuki Showroom Ashok Path,
Trimurti House, Erandwane, Pune Maharashtra 411004.

HO. Binawat Realty, V.B. Deshpande Building, Alka Chowk, Sadashiv Peth, Pune 411030